

FROM THE FOUNDER OF THE #VIKISEWS BRAND



Back in 2016, when I was working on my first set of sewing instructions, I was trying to write them in such a way that even a complete beginner could easily understand and use them to create their very first garment. These instructions laid the foundation for the Vikisews brand, its vision and its mission. I wanted to create modern patterns with the utmost detailed and clear instructions.

Now, with each new collection we are constantly improving our instructions, amending them and adding more relevant details. By the time the final product reaches you, our drafters, correctors, and editors would have spent weeks perfecting every word and every photograph. If you compile a few of our instructions together, you will get a sewing manual that will assist you in sewing all kinds of garments at any difficulty level.

And I would be very happy if these instructions helped you to turn your hobby into a lifelong passion... Enjoy the process! Create your ultimate dream wardrobe! Wear your garments proudly for years to come!

If you have any questions, please contact us at info@vikisews.com — we are always there to help.



MARIAH PATTERN DESCRIPTION

Mariah is a close-fitting empire-waist dress. At the top, the front is made up of the top front and front sleeve pieces. The top front is folded over the front sleeves assembled at the front neck for a twist effect, creating beautiful curved cutouts. The dress features a V-shaped back neck and long raglan sleeves. The front is fitted with bust darts transferred to the side seams, as well as with waist darts. The back is fitted with waist darts and the center back seam that ends with a slit. Mariah is below mid-calf length.



IMPORTANT!

The contents of this pattern are copyright protected and belong exclusively to Vikisews. You may use Vikisews patterns for personal use. It is prohibited to share Vikisews patterns and instructions with third parties, as well as to publish patterns and instructions online for public access. According to part 1 of clause 1252 and clause 1301 of the Civil Code of the Russian Federation, failure to comply with the mentioned rules constitutes a breach of the legislation in force in the field of copyright and entails liability of the violator. Illegal use or distribution will be prosecuted in accordance with legislation.

You may use Vikisews patterns for commercial use, to sew custom-made garments and/or create fashion collections, on the condition that the patterns are solely used in a manufacturing setting and are not further shared with individuals.

TOTAL EASE ALLOWANCE

	Bust ease (estimated)	Waistline ease	Hipline ease	Upper arm ease
cm	0	-0.7-1.4	-1	1-3.4
inches	0	-1/4-1/2	-3/8	3/8-1 3/8

GARMENT LENGTH, SLEEVE LENGTH

Height, cm	Back length, cm	Sleeve length, cm
1 (154-160)	87.1	73.7-75.4
2 (162-168)	90.1	75.7-77.4
3 (170-176)	93.1	77.7-79.4
4 (178-184)	96.1	79.7-81.4

Height, ft	Back length, in	Sleeve length, in
1 (5'1"-5'3")	34 1/4	29-29 5/8
2 (5'4"-5'6")	35 1/2	29 3/4-30 1/2
3 (5'7"-5'9")	36 5/8	30 5/8-31 1/4
4 (5'10"-6'1")	37 7/8	31 3/8-32

SUGGESTED FABRIC

To sew this garment, choose knit fabrics with the following properties:

- medium weight, soft, with elastane or spandex
- the fiber content can include natural fibers (wool, cotton), artificial fibers (viscose), blends (wool + polyester + elastane, cotton + polyester + elastane, cotton + elastane, etc.), and synthetics (polyester + elastane)
- the following fabrics are recommended: double knits, rib knits, sweater knits.

Attention! We recommend sewing this dress of an elastane or spandex blend.

The dress in the photo is made of double knit fabric. The fabric is medium weight and soft. The fiber content is 95% polyester and 5% spandex.

TOOLS AND EQUIPMENT

- sewing machine for construction
- overlocker for construction and finishing raw edges. It can be replaced with a stretch overlock stitch or a zigzag stitch on the sewing machine (overlock or zigzag stitch width 2–3 mm, stitch length 2.5 mm)
- coverstitch or coverlock machine for finishing the garment and sleeve hems, neckline and raglan line. It can be replaced with a twin needle on a regular sewing machine that can do a zigzag stitch.
- latch hook. It can be replaced with a large-eye needle.

***IMPORTANT!** We recommend using specialty needles when working with knit fabrics (for example, STRETCH, SUPER STRETCH, JERSEY, etc.). When sewing, a ball-shaped needle point pushes the knit loops apart without piercing the threads.*

PATTERN PIECES LIST

1. From main fabric:

- front sleeve — cut 2
- back sleeve — cut 2
- top front — cut 2
- front — cut 1 on fold
- back — cut 2.

***IMPORTANT!** Don't forget to transfer all pattern markings and notches onto the fabric.*

2. From interfacing:

- Back slit seam allowances.

To interface the seam allowances, cut strips of interfacing that are 2 cm (3/4") wide and equal in length to the slit (as measured on the pattern). The strips should be cut on the cross grain (perpendicular to the selvedge).

SEAM ALLOWANCES

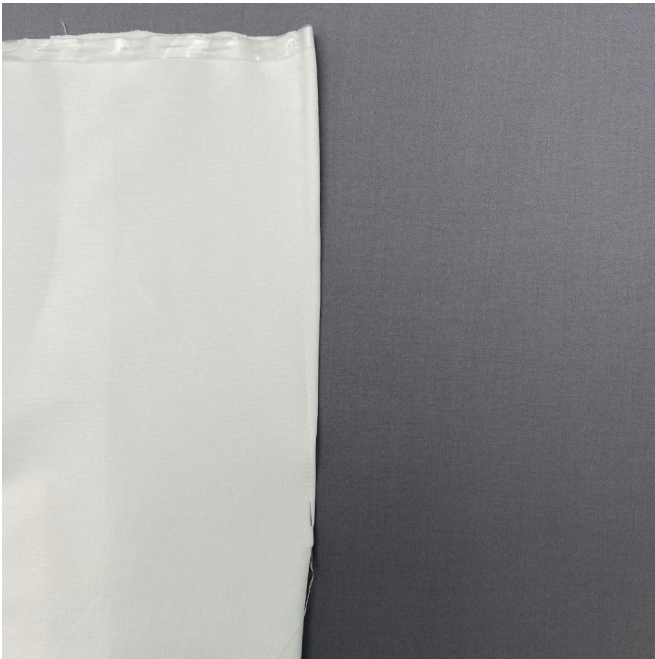
All pattern pieces include seam allowances as follows:

- garment hem allowance — 2 cm (3/4")
- sleeve hem allowance — 2 cm (3/4")
- all other edges — 1 cm (3/8").

Take this into account when laying out pattern pieces on the fabric.



Pin and baste the darts on the wrong side of the front piece. Machine-stitch the darts, backstitching at the waist edge.



Tie the thread tails at the dart point into a knot and hide them inside the dart bulk using a needle.



Press the dart flat.