

FROM THE FOUNDER OF THE #VIKISEWS BRAND

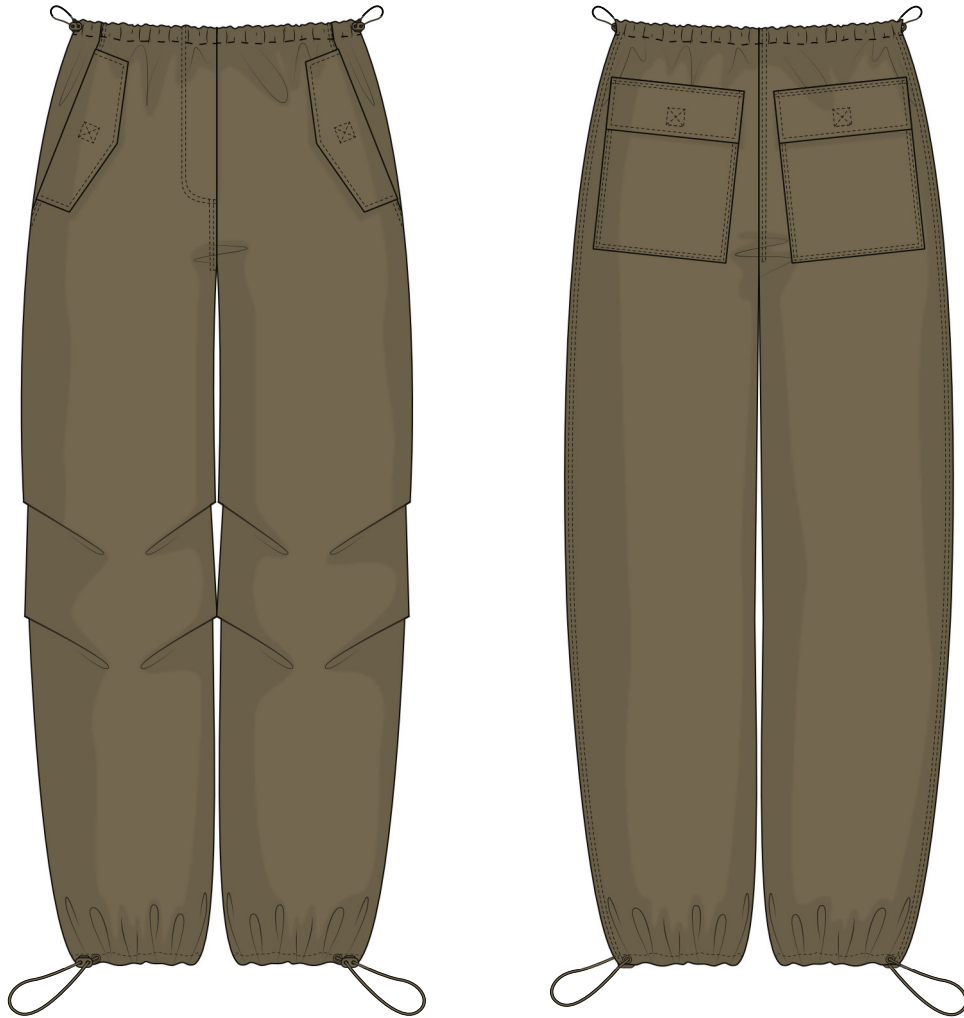


Back in 2016, when I was working on my first set of sewing instructions, I was trying to write them in such a way that even a complete beginner could easily understand and use them to create their very first garment. These instructions laid the foundation for the Vikisews brand, its vision and its mission. I wanted to create modern patterns with the utmost detailed and clear instructions.

Now, with each new collection we are constantly improving our instructions, amending them and adding more relevant details. By the time the final product reaches you, our drafters, correctors, and editors would have spent weeks perfecting every word and every photograph. If you compile a few of our instructions together, you will get a sewing manual that will assist you in sewing all kinds of garments at any difficulty level.

And I would be very happy if these instructions helped you to turn your hobby into a lifelong passion... Enjoy the process! Create your ultimate dream wardrobe! Wear your garments proudly for years to come!

If you have any questions, please contact us at info@vikisews.com — we are always there to help.



PAM PATTERN DESCRIPTION

Pam is a pair of loose-fitting, straight-cut pants. The top edge is finished with a bias facing stitched down along the casing line. Pieces of elastic cord with stoppers at the side seams are threaded through casings at the waist and leg hems. Slash pockets on the front and patch pockets on the back have flaps with Velcro closures. Small pleats at the side seams and inseams shape the knee line of the front legs. The side seams feature decorative topstitching. The pants are floor length.



IMPORTANT!

The contents of this pattern are copyright protected and belong exclusively to Vikisews. You may use Vikisews patterns for personal use. It is prohibited to share Vikisews patterns and instructions with third parties, as well as to publish patterns and instructions online for public access. According to part 1 of clause 1252 and clause 1301 of the Civil Code of the Russian Federation, failure to comply with the mentioned rules constitutes a breach of the legislation in force in the field of copyright and entails liability of the violator. Illegal use or distribution will be prosecuted in accordance with legislation.

You may use Vikisews patterns for commercial use, to sew custom-made garments and/or create fashion collections, on the condition that the patterns are solely used in a manufacturing setting and are not further shared with individuals.

TOTAL EASE ALLOWANCE

	Waistline ease (estimated)	Hipline ease
cm	23.3–25.2	10.1–15.7
inches	9 1/8–9 7/8	4–6 1/8

GARMENT LENGTH

Height, cm	Side seam length, cm	Height, ft	Side seam length, in
1 (154–160)	99.7–102.6	1 (5'1"–5'3")	39 1/4–40 3/8
2 (162–168)	104–106.9	2 (5'4"–5'6")	41–42 1/8
3 (170–176)	108.3–111.1	3 (5'7"–5'9")	42 5/8–43 3/4
4 (178–184)	112.5–115.4	4 (5'10"–6'1")	44 1/4–45 3/8

FINISHED HEM WIDTH

Size, height	34	36	38	40	42	44	46	48	50	52
Centimeters	26	26.7	27.5	28.2	29	30	31	32	33	34
Inches	10 1/4	10 1/2	10 7/8	11 1/8	11 3/8	11 3/4	12 1/4	12 5/8	13	13 3/8

SUGGESTED FABRIC

To sew these pants, choose fabrics with the following properties:

- medium weight, thin, structured, non-stretch or with very little stretch
- the fiber content can include natural fibers (wool, cotton, linen), artificial fibers (viscose), blends (wool + polyester, cotton + viscose, etc.), and synthetics (polyester, polyester + elastane)
- The following fabrics are recommended: medium weight cotton, thin raincoat fabrics.

Attention! We do not recommend knit fabrics with a lot of stretch or heavyweight fabrics.

The pants in the photo are made of raincoat fabric (dewspo). The fabric is medium weight, non-stretch and structured. The fiber content is 100% polyester.

PATTERN PIECES LIST

1. From main fabric:

- front leg — cut 2
- back leg — cut 2
- slash pocket — cut 2
- slash pocket bag — cut 2
- patch pocket — cut 2
- slash pocket flap — cut 4
- patch pocket flap — cut 4
- waist casing — cut 2

2. From interfacing:

- slash pocket flap — cut 2
- patch pocket flap — cut 2
- fly front on the right front leg — cut 1
- patch pocket top edge — cut 2

***IMPORTANT!** Don't forget to transfer all pattern markings and notches onto the fabric.*

Additionally, cut 8 square pieces of interfacing, 2.5×2.5 cm (1"×1"), to be applied to grommet placement areas on the front and back legs and on the slash pocket piece.

SEAM ALLOWANCES

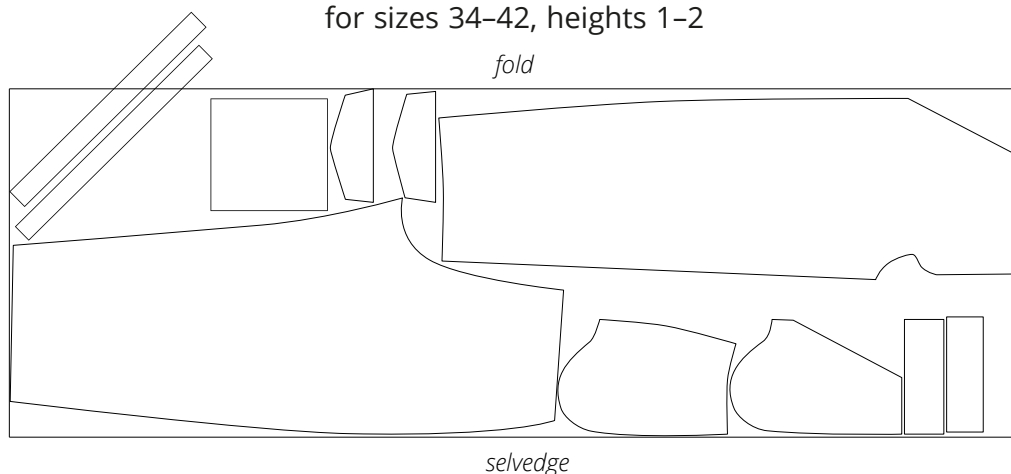
All pattern pieces include seam allowances as follows:

- garment hem allowance — 4 cm (1 5/8")
- all other edges — 1 cm (3/8").

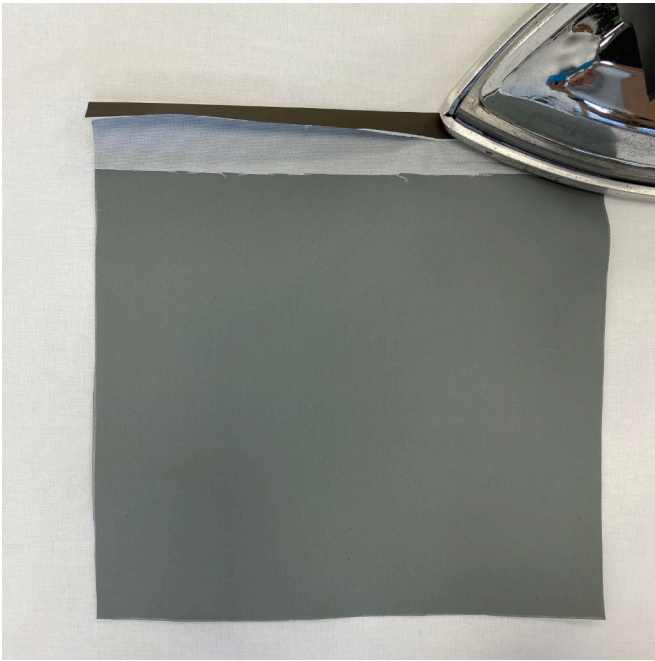
Take this into account when laying out pattern pieces on the fabric.

CUTTING LAYOUT

Main fabric, 140 cm (55") wide, with a directional print/nap, cut on fold, for sizes 34–42, heights 1–2

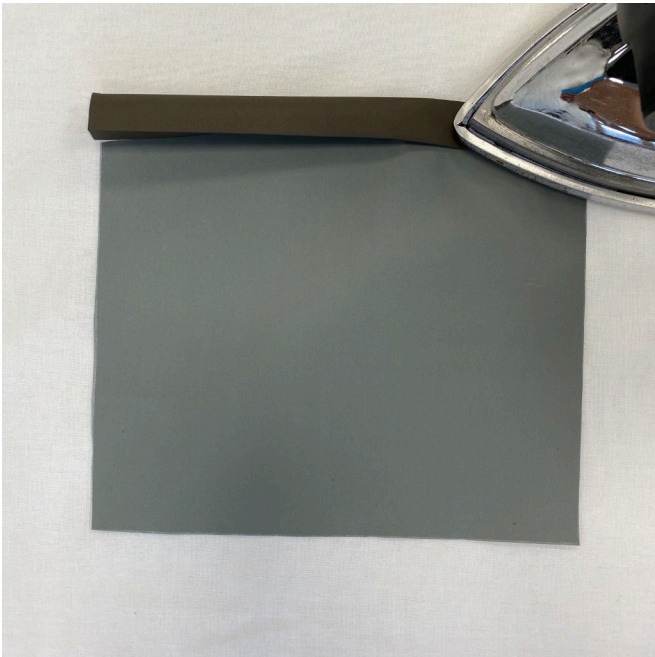


Attention! Cut the waist casing pieces on the bias on a single layer out of the leftover fabric.



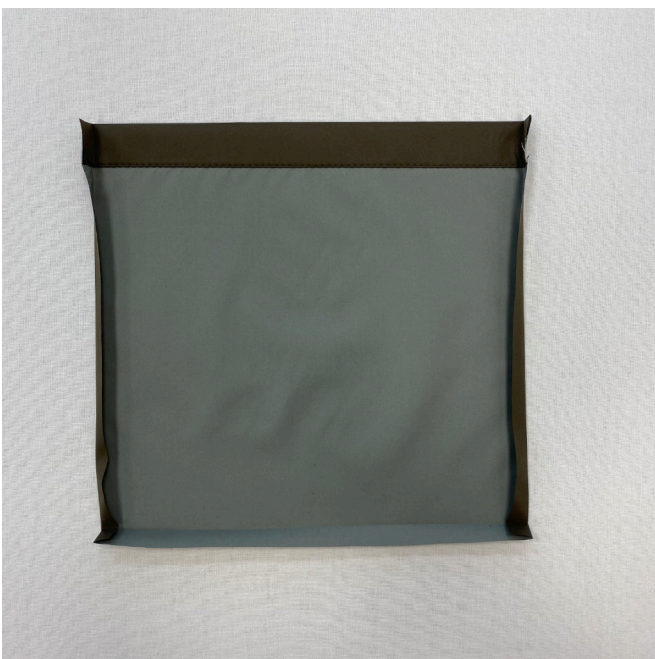
Press the top edge of the patch pocket to the wrong side by 1 cm (3/8") without using the steam function of your iron.

Attention! Whenever pressing is required hereafter, no steam should be used.



Fold the pressed edge of the patch pocket to the wrong side along the foldline.

Press the hem allowance.



Secure the top edge of the pocket in place by stitching with the wrong side up, 2 mm away from the fold you pressed first. Use a 4 mm stitch length.

Press the side and bottom seam allowances of the patch pocket to the wrong side.