

FROM THE FOUNDER OF THE #VIKISEWS BRAND

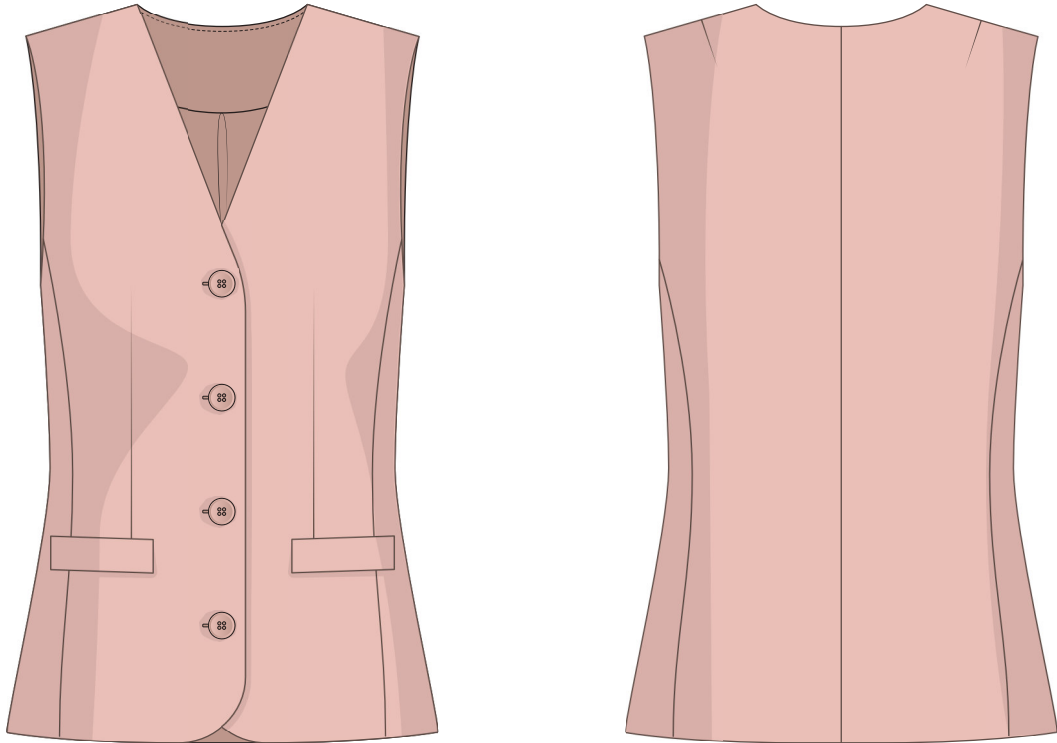


Back in 2016, when I was working on my first set of sewing instructions, I was trying to write them in such a way that even a complete beginner could easily understand and use them to create their very first garment. These instructions laid the foundation for the Vikisews brand, its vision and its mission. I wanted to create modern patterns with the utmost detailed and clear instructions.

Now, with each new collection we are constantly improving our instructions, amending them and adding more relevant details. By the time the final product reaches you, our drafters, correctors, and editors would have spent weeks perfecting every word and every photograph. If you compile a few of our instructions together, you will get a sewing manual that will assist you in sewing all kinds of garments at any difficulty level.

And I would be very happy if these instructions helped you to turn your hobby into a lifelong passion... Enjoy the process! Create your ultimate dream wardrobe! Wear your garments proudly for years to come!

If you have any questions, please contact us at info@vikisews.com — we are always there to help.



KELSEY PATTERN DESCRIPTION

Kelsey is a semi-fitted fully lined vest. The front features bust darts transferred to the princess seams and pocket lines. The vest has welt pockets with sewn-in ends. The back features a center seam, princess seams, and shoulder darts. The vest fastens with buttons and buttonholes at the center front. Kelsey is hip-length.



IMPORTANT!

The contents of this pattern are copyright protected and belong exclusively to Vikisews. You may use Vikisews patterns for personal use. It is prohibited to share Vikisews patterns and instructions with third parties, as well as to publish patterns and instructions online for public access. **Non-compliance with the mentioned rules is a violation of the US copyright law and may result in civil liability and criminal prosecution.**

You may use Vikisews patterns for commercial use, to sew custom-made garments and/or create fashion collections, on the condition that the patterns are solely used in a manufacturing setting and are not further shared with individuals.

TOTAL EASE ALLOWANCE

| | Bust ease | Waistline ease | Hipline ease |
|--------|-------------|----------------|--------------|
| cm | 6–6.3 | 16.2–19.5 | 9.6–11.1 |
| inches | 2 3/8–2 1/2 | 6 3/8–7 5/8 | 3 3/4–4 3/8 |

GARMENT LENGTH

| Height, cm | Garment length, cm | Height, ft | Garment length, in |
|-------------|--------------------|----------------|--------------------|
| 1 (154–160) | 52.4–54.2 | 1 (5'1"–5'3") | 20 5/8–21 3/8 |
| 2 (162–168) | 55.9–57.7 | 2 (5'4"–5'6") | 22–22 3/4 |
| 3 (170–176) | 59.4–61.2 | 3 (5'7"–5'9") | 23 3/8–24 1/8 |
| 4 (178–184) | 62.9–64.7 | 4 (5'10"–6'1") | 24 3/4–25 1/2 |

SUGGESTED FABRIC

To sew this vest, choose suiting fabrics with the following properties:

- medium weight, pliable, soft, non-stretch or with very little stretch, opaque
- the fiber content can include natural fibers (wool, silk, cotton, linen), artificial fibers (viscose), blends (wool + silk, wool + polyester, cotton + viscose, etc.), and synthetics (polyester, polyester + elastane)
- the following fabrics are recommended: wool suiting, gabardine, crepe, heavyweight silk, linen

Attention! We do not recommend stretchy knit fabrics and lightweight sheer fabrics (blouse-weight silk).

For the lining, choose lining fabrics made of artificial fibers (viscose), blends (viscose + elastane, viscose + polyester), or synthetics (polyester, polyester + elastane).

The vest in the photo is made of suiting fabric. The fabric is medium weight, pliable, soft and with very little stretch. The fabric weight is 290 g/m². The fiber content is a blend of viscose and polyester. The lining's fiber content is a blend of viscose and polyester.

TOOLS AND EQUIPMENT

- sewing machine for construction
- buttonhole foot for the sewing machine
- stitch-in-the-ditch foot for the sewing machine (optional)
- overlocker for finishing raw edges (optional, if the lining fabric frays easily). It can be replaced with a stretch overlock stitch or a zigzag stitch on the sewing machine (overlock or zigzag stitch width 2–3 mm, stitch length 2.5 mm)

PATTERN PIECES LIST

1. From main fabric:

- front — cut 2
- back — cut 2
- side — cut 2
- welt — cut 2
- top pocket bag — cut 2
- front facing — cut 2
- back neck facing — cut 1
- front armscye facing — cut 2
- back armscye facing — cut 2

2. From lining fabric:

- front lining — cut 2
- back lining — cut 1 on fold
- side lining — cut 2
- bottom pocket bag — cut 2

***IMPORTANT!** Don't forget to transfer all pattern markings and notches onto the fabric.*

3. From interfacing:

- front — cut 2
- back — cut 2
- side — cut 2
- welt — cut 2
- front facing — cut 2
- back neck facing — cut 1
- front armscye facing — cut 2
- back armscye facing — cut 2

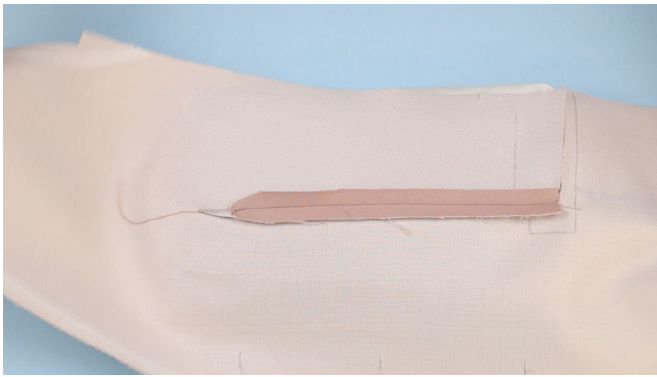
Additionally, cut two interfacing strips, 6 cm (2 3/8") wide, to interface the pocket area. The interfacing strips should be cut on the straight grain (parallel to the selvedge).

SEAM ALLOWANCES

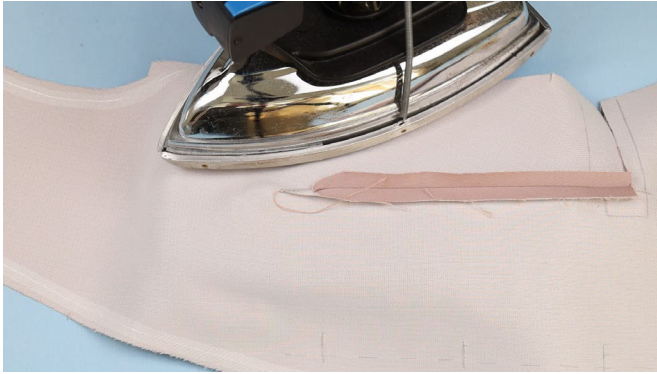
All pattern pieces include seam allowances as follows:

- garment hem allowance — 4 cm (1 5/8")
- side and bottom edges of the pocket bag — 1.5 cm (5/8")
- all other edges — 1 cm (3/8")

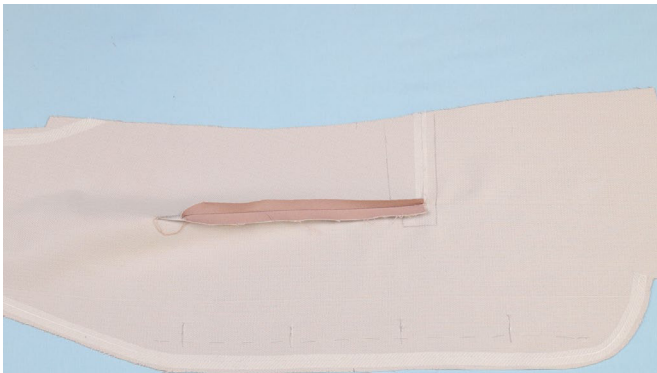
Take this into account when laying out pattern pieces on the fabric.



Press the dart seam allowances open.



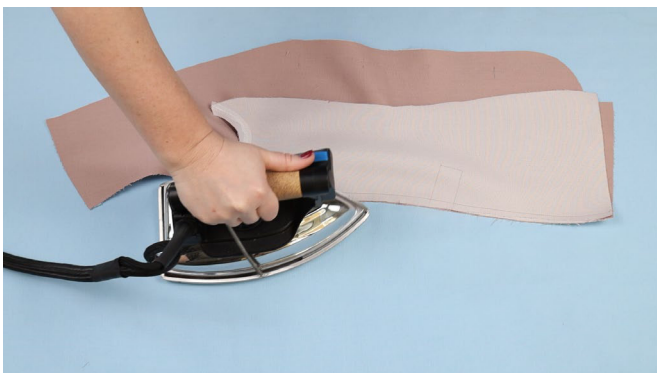
Shrink out the fullness at the dart point on a tailor's ham by ironing with a circular motion.



Position the sides of the pocket edge-to-edge and use the interfacing strip or straight-grain fusible stay tape to fuse them together.



Place the front and side pieces right sides together. Align the princess seam edges. Match the notches, pin and machine-stitch, backstitching at the beginning and end.



Press the seam flat.