

FROM THE FOUNDER OF THE #VIKISEWS BRAND

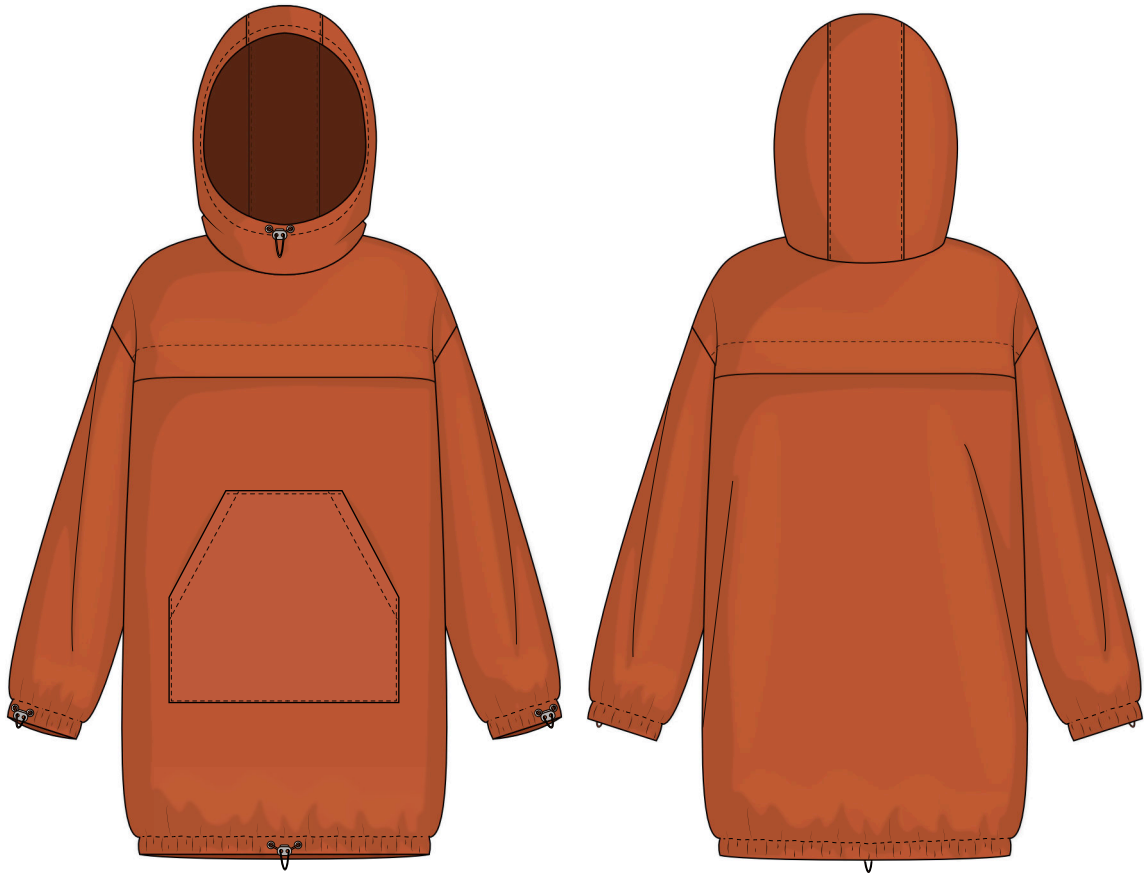


Back in 2016, when I was working on my first set of sewing instructions, I was trying to write them in such a way that even a complete beginner could easily understand and use them to create their very first garment. These instructions laid the foundation for the Vikisews brand, its vision and its mission. I wanted to create modern patterns with the most detailed and clear instructions.

Now, with each new collection we are constantly improving our instructions, amending them and adding more relevant details. By the time the final product reaches you, our drafters, correctors, and editors would have spent weeks perfecting every word and every photograph. If you compile a few of our instructions together, you will get a sewing manual that will assist you in sewing all kinds of garments at any difficulty level.

And I would be very happy if these instructions helped you to turn your hobby into a lifelong passion... Enjoy the process! Create your ultimate dream wardrobe! Wear your garments proudly for years to come!

If you have any questions, please contact us at info@vikisews.com - we are always there to help.



NEYA PATTERN DESCRIPTION

Neya is a loose-fitting anorak, with a straight silhouette, and a hood. On the upper front and back, the anorak features decorative pleats that mimic yokes. The front has a kangaroo patch pocket with two pocket openings. Neya has long shirt sleeves. The anorak and sleeve hems, as well as the edge of the hood, feature decorative elastic cords threaded through eyelets and casings. Neya is mid-hip length.



IMPORTANT!

The contents of this pattern are copyright protected and belong exclusively to Vikisews. You may use Vikisews patterns for personal use. It is prohibited to share Vikisews patterns and instructions with third parties, as well as to publish patterns and instructions online for public access. **Non-compliance with the mentioned rules is a violation of the US copyright law and may result in civil liability and criminal prosecution.**

You may use Vikisews patterns for commercial use, to sew custom-made garments and/or create fashion collections, on the condition that the patterns are solely used in a manufacturing setting and are not further shared with individuals.

TOTAL EASE ALLOWANCE

Bust ease, cm	Waistline ease, cm	Hipline ease, cm	Upper arm ease, cm
45	65.1	39.2	23

GARMENT LENGTH, SLEEVE LENGTH

Height, cm	Anorak length at back, cm	Sleeve length including shoulder width, cm
1 (154-160)	77.2-79	73.4-76.9
2 (162-168)	80.2-82	75.3-78.8
3 (170-176)	83.2-85	77.4-80.9
4 (178-184)	86.2-88	79.4-82.9

SUGGESTED FABRIC

To sew this anorak, choose lightweight raincoat fabrics with the following properties:

- light to medium weight, non-stretch or with little stretch, windproof and water repellent
- the fabric content can include synthetic fibers (polyester, polyester + elastane)
- the following fabrics are recommended: raincoat fabric.

Attention! We do not recommend very stretchy knit materials (jersey fabric) and lightweight sheer fabrics (chiffon, organza, stretch lace).

The anorak on the photo is made in 100% polyester. This fabric is lightweight, opaque, and may slightly crease.

3. Lightweight fusible interfacing (either knit or woven), for all sizes – 0.3 m
4. Eight eyelets, 0.5 in diameter
5. Four double-hole drawstring cord locks
6. Matching thread – 1 spool.

IMPORTANT! When purchasing fabric, please account for shrinkage and buy 5% more than required.

TOOLS AND EQUIPMENT

- sewing machine for construction
- eyelet pliers to punch the holes and insert the eyelets
- bodkin for threading elastic cord through a casing (may be replaced with a safety pin)
- bias tape maker

PATTERN PIECES LIST

1. From main fabric:

- front – cut 1 on fold
- back – cut 1 on fold
- sleeve – cut 2
- hood side panel – cut 1 on fold
- hood center panel – cut 1
- hood side panel lining – cut 1 on fold
- hood center panel lining – cut 1
- pocket – cut 1 on fold

2. From interfacing:

- four 3x3 cm squares, to interface sections where the eyelets will be inserted on the front, and hood side panel pieces
- two strips 3x5 cm to interface sections where the eyelets will be inserted on the sleeves
- two strips, 4 cm wide, to interface the pocket opening seam allowance. The strips must be equal to the length of the pocket opening seam allowance.
- strips, 1.5 cm wide, to interface the seam allowances along the edges of the pocket. The length of the strips must be equal to the pocket perimeter, minus the length of the pocket opening seam allowance.

The grainline on the interfacing should be parallel to the longer side of the strips.

IMPORTANT! Don't forget to transfer all pattern markings and notches onto the fabric.



All other seam allowances around the pocket should be turned to the wrong side, pinned, basted, and pressed.



Transfer from pattern pieces pleat and fold lines placement on the front and back pieces, as well as the pocket stitching line on the front piece.



Using the markings of the pocket stitching line as a guide, place the pocket on the front piece. Pin, baste, and machine the pocket (except for the pocket openings) in place at 1 mm from the pocket edge.

Backstitch in the beginning and end.
Press the pocket.