

FROM THE FOUNDER OF THE #VIKISEWS BRAND



Back in 2016, when I was working on my first set of sewing instructions, I was trying to write them in such a way that even a complete beginner could easily understand and use them to create their very first garment. These instructions laid the foundation for the Vikisews brand, its vision and its mission. I wanted to create modern patterns with the utmost detailed and clear instructions.

Now, with each new collection we are constantly improving our instructions, amending them and adding more relevant details. By the time the final product reaches you, our drafters, correctors, and editors would have spent weeks perfecting every word and every photograph. If you compile a few of our instructions together, you will get a sewing manual that will assist you in sewing all kinds of garments at any difficulty level.

And I would be very happy if these instructions helped you to turn your hobby into a lifelong passion... Enjoy the process! Create your ultimate dream wardrobe! Wear your garments proudly for years to come!

If you have any questions, please contact us at info@vikisews.com — we are always there to help.



OPRAH PATTERN DESCRIPTION

Oprah is a semi-fitted, fully lined jacket with a straight silhouette. The curved-edge front panels feature bust darts and faux welt pockets. The jacket is designed with long raglan sleeves and a rounded, collarless neckline. The jacket is double-breasted and fastens with buttons and buttonholes. Oprah is above-the-hip length.



IMPORTANT!

The contents of this pattern are copyright protected and belong exclusively to Vikisews. You may use Vikisews patterns for personal use. It is prohibited to share Vikisews patterns and instructions with third parties, as well as to publish patterns and instructions online for public access. **Non-compliance with the mentioned rules is a violation of the US copyright law and may result in civil liability and criminal prosecution.**

You may use Vikisews patterns for commercial use, to sew custom-made garments and/or create fashion collections, on the condition that the patterns are solely used in a manufacturing setting and are not further shared with individuals.

TOTAL EASE ALLOWANCE

	Bust ease	Hipline ease	Upper arm ease
cm	18	32.8–33.7	8.6
inches	7 1/8	12 7/8–13 1/4	3 3/8

GARMENT LENGTH, SLEEVE LENGTH

Height, cm	Back length, cm	Sleeve length including shoulder width, cm
1 (154–160)	41.1–41.7	74.3–75.7
2 (162–168)	42.3–43.3	76.3–77.5
3 (170–176)	43.5–44.5	78.4–79.6
4 (178–184)	44.7–45.7	79.6–80.6

Height, ft	Back length, in	Sleeve length including shoulder width, in
1 (5'1"–5'3")	16 1/8–16 3/8	29 1/4–29 3/4
2 (5'4"–5'6")	16 5/8–17	30–30 1/2
3 (5'7"–5'9")	17 1/8–17 1/2	30 7/8–31 3/8
4 (5'10"–6'1")	17 5/8–18	31 3/8–31 3/4

SUGGESTED FABRIC

To sew this jacket, choose suiting fabrics with the following properties:

- medium weight, structured, non-stretch or with very little stretch, opaque
- the fiber content can include natural fibers (wool), artificial fibers (viscose), blends (wool + polyester, cotton + viscose, etc.), and synthetics (polyester)
- the following fabrics are recommended: tweed, basket weave fabrics, coating fabrics.

Attention! We do not recommend stretchy fabrics (knits), lightweight soft fabrics (dress-weight wool), heavyweight wool fabrics, thin, soft, fluid, loosely woven fabrics.

For the lining, choose lining fabrics made of artificial fibers (viscose), blends (viscose + elastane, viscose + polyester), or synthetics (polyester, polyester + elastane).

Lightweight interfacing, knit or woven, 55" wide, in yards:

Height, ft	Size									
	34	36	38	40	42	44	46	48	50	52
1 (5'1"–5'3")	1 1/4	1 3/8	1 3/8	1 3/8	1 3/8	1 1/2	1 1/2	1 1/2	1 1/2	1 5/8
2 (5'4"–5'6")	1 3/8	1 3/8	1 3/8	1 3/8	1 3/8	1 5/8	1 5/8	1 5/8	1 5/8	1 3/4
3 (5'7"–5'9")	1 3/8	1 3/8	1 3/8	1 3/8	1 1/2	1 5/8	1 5/8	1 5/8	1 5/8	1 3/4
4 (5'10"–6'1")	1 3/8	1 3/8	1 1/2	1 1/2	1 1/2	1 5/8	1 5/8	1 5/8	1 3/4	1 3/4

4. Stitched bias-cut fusible stay tape with stitch reinforcement, 1.5 cm (5/8") wide — 5.3 m (5 3/4 yd)

5. Two buttons, 2.2 cm (7/8") in diameter

6. One pair of raglan shoulder pads, front to back length — 12 cm (4 3/4"), neck to shoulder length — 17 cm (6 3/4")

7. Matching thread — 5 spools (1 spool for the sewing machine + 4 spools for the overlocker).

TOOLS AND EQUIPMENT

- sewing machine for construction
- overlocker for finishing raw bottom edges of the welts. This may be replaced with a stretch overlock stitch or a zigzag stitch on the sewing machine (overlock or zigzag stitch width 2–3 mm, stitch length 2.5 mm)
- buttonhole foot for the sewing machine
- stitch-in-the-ditch foot for the sewing machine (optional)
- latch hook or large-eye needle

PATTERN PIECES LIST

1. From main fabric:

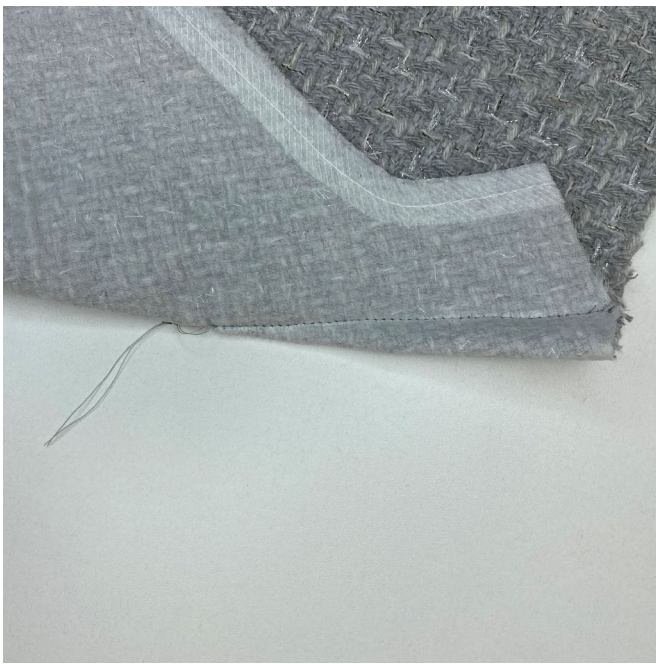
- front — cut 2
- back — cut 1 on fold
- front sleeve — cut 2
- back sleeve — cut 2
- front facing — cut 2
- back neck facing — cut 1 on fold
- welt — cut 2.

2. From lining fabric:

- front lining — cut 2
- back lining — cut 1 on fold
- front sleeve lining — cut 2
- back sleeve lining — cut 2.

IMPORTANT! Don't forget to transfer all pattern markings and notches onto the fabric.

Attention! Interface (block fuse) the main fabric prior to cutting the pieces (except the welt pieces).



Tie the thread tails at the dart point into a knot and hide them inside the dart bulk using a needle.



Press the dart flat.



Measure and mark 1 cm allowance from the dart stitching line towards the fold.
Trim the extra dart width.