

FROM THE FOUNDER OF THE #VIKISEWS BRAND

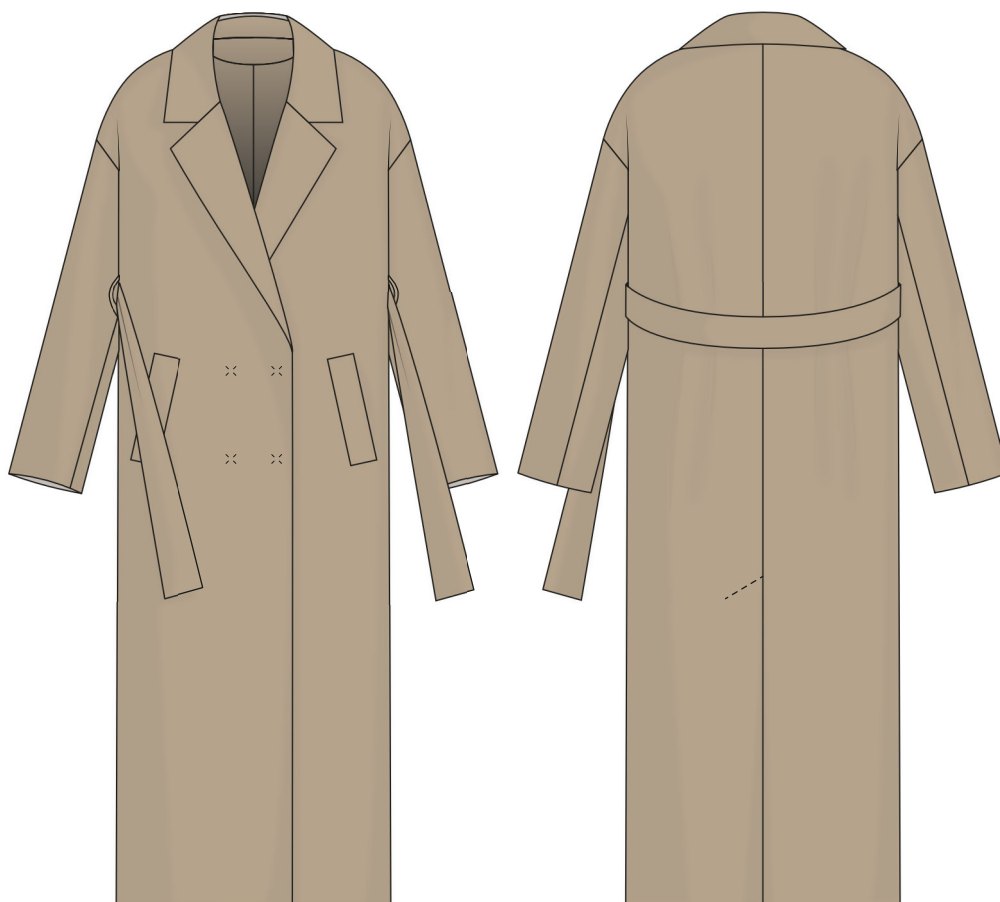


Back in 2016, when I was working on my first set of sewing instructions, I was trying to write them in such a way that even a complete beginner could easily understand and use them to create their very first garment. These instructions laid the foundation for the Vikisews brand, its vision and its mission. I wanted to create modern patterns with the most detailed and clear instructions.

Now, with each new collection we are constantly improving our instructions, amending them and adding more relevant details. By the time the final product reaches you, our drafters, correctors, and editors would have spent weeks perfecting every word and every photograph. If you compile a few of our instructions together, you will get a sewing manual that will assist you in sewing all kinds of garments at any difficulty level.

And I would be very happy if these instructions helped you to turn your hobby into a lifelong passion... Enjoy the process! Create your ultimate dream wardrobe! Wear your garments proudly for years to come!

If you have any questions, please contact us at info@vikisews.com - we are always there to help.



MARTINA PATTERN DESCRIPTION

Martina is an oversized, double-breasted, fully-lined coat with a straight cut. The front bust darts have been transferred into shoulder seams. The coat features a notched collar with a separate collar stand. Martina has long, wide, two-piece, drop-shoulder sleeves. The front features topstitched welt pockets. There is a vent in the center back seam. The coat closes with 4 sew-on snaps. The tie belt is threaded through belt loops in the side seams. Martina is above-ankle length.



IMPORTANT!

The contents of this pattern are copyright protected and belong exclusively to Vikisews. You may use Vikisews patterns for personal use. It is prohibited to share Vikisews patterns and instructions with third parties, as well as to publish patterns and instructions online for public access. **Non-compliance with the mentioned rules is a violation of the US copyright law and may result in civil liability and criminal prosecution.**

You may use Vikisews patterns for commercial use, to sew custom-made garments and/or create fashion collections, on the condition that the patterns are solely used in a manufacturing setting and are not further shared with individuals.

TOTAL EASE ALLOWANCE

	Bust ease	Waistline ease	Hipline ease	Upper arm ease
cm	34.4-40.6	54-60.2	27-33.3	17.9-20.8
inches	13 1/2 - 16	21 1/4 - 23 3/4	10 3/4 - 13	7 - 8 1/4

GARMENT LENGTH, SLEEVE LENGTH

Height, cm	Garment length at center back, cm	Sleeve length including shoulder width, cm
1 (154-160)	115.5	72.6-76.2
2 (162-168)	118.5	74.6-78.1
3 (170-176)	121.5	76.5-80
4 (178-184)	124.5	78.5-82

Height, ft	Garment length at center back, in	Sleeve length including shoulder width, in
1 (5'1"-5'3")	45 1/2	28 1/2 - 30
2 (5'4"-5'6")	46 3/4	29 1/4 - 30 3/4
3 (5'7"-5'9")	47 3/4	30 - 31 1/2
4 (5'10"-6'1")	49	31 - 32 1/4

SUGGESTED FABRIC

To sew this coat, choose coating fabrics with the following properties:

- medium-weight, pliable, soft
- the fiber content can include natural fibers (wool, cashmere, alpaca, mohair), blends (wool + cashmere + polyester, wool + alpaca + viscose, wool + mohair + polyamide)
- the following fabrics are recommended: wool, alpaca, cashmere, mohair.

Attention! We do not recommend heavyweight, stiff, structured materials.

For the lining, use lining fabrics made from artificial fibers (viscose), blends (viscose + elastane, viscose + polyester), or synthetics (polyester, polyester + elastane).

The coat in the photos is made from a wool/cashmere coating blend. The fabric is medium-weight, soft, pliable. The fiber content is 85% wool and 15% cashmere. The lining is 100% viscose.

5. Four sew-on snaps, 2-2,2cm (3/4-7/8") in diameter
6. Matching thread - 1 spool.

TOOLS AND EQUIPMENT

- sewing machine for construction
- loop turner (for turning the belt and belt loops)

PATTERN PIECES LIST

IMPORTANT! Don't forget to transfer all the notches from the pattern to your fabric

1. From main fabric:

- front - cut 2
- back - cut 2
- top sleeve - cut 2
- bottom sleeve - cut 2
- upper collar - cut 1 on fold
- undercollar - cut 2
- collar stand - cut 2
- back neck facing - cut 1 on fold
- front facing - cut 2
- welt - cut 2
- top pocket facing - cut 2
- bottom pocket facing - cut 2
- tie belt - cut 1
- belt loops - cut 1 (makes 2 loops)

Also from the main fabric, cut 4 strips that are 3cm (1 1/8") wide and 20cm (7 7/8") long. These will be used to finish the bust dart. The long side of the strips should be parallel to the grainline.

2. From lining fabric:

- front lining - cut 2
- back lining - cut 2
- top sleeve lining - cut 2
- bottom sleeve lining - cut 2
- pocket lining - cut 4

3. From interfacing:

- upper collar - cut 1
- undercollar - cut 2
- collar stand - cut 2
- back neck facing - cut 1
- front facing - cut 2
- welt - cut 2
- bottom front hem allowance - cut 2
- bottom back hem allowance - cut 2
- welt extension - 2 pieces
- top sleeve hem allowance - cut 2
- bottom sleeve hem allowance - cut 2
- straight grain strip for the pocket opening - cut 2

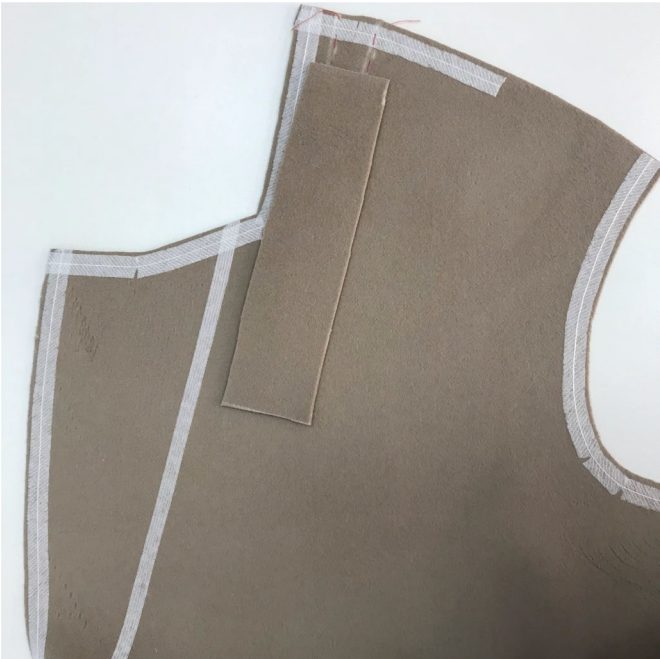
Also from interfacing, cut the following pieces:

- 2 strips that are 3cm (1 1/8") wide and 10cm (3 7/8") long to interface the bust dart
- 3x3cm (1 1/8 x 1 1/8") square to interface the vent lining seam area

The long sides of the interfacing pieces should be parallel to the grainline.



On the right side of the coat front, mark the stitching line of the additional fabric strip, from the tip of the dart to the point where the dart is 2cm (3/4") wide.



Place the additional strip of fabric onto the wrong side of the dart, positioning the marked line exactly in the middle of the strip. The strip should extend beyond the marking by 2cm (3/4") at both ends.



Turn the coat front right side up and machine-stitch along the marked line, backstitching at the beginning and end of the seam.