

### SIMONA

Simona is a semi-fitted jumpsuit with an accentuated waist. It features gathered yokes at the front and back and an elasticated casing at the waist. The jumpsuit has side seam pockets and fastens with buttons and button loops. The long raglan sleeves are draped at the top and flared towards the bottom. The sleeve hems feature casings threaded with drawstrings. Simona is below-ankle length.

### GARMENT EASE

	Bust ease	Waistline ease	Hipline ease	Upper arm ease
centimeters	31.2–28.8	41.2–43.5	20.5–16	20–23.8
inches	12 1/4–11 3/8	16 1/4–17 1/8	8 1/8–6 1/4	7 7/8–9 3/8

### GARMENT LENGTH

Height, cm	Side seam length, cm									
	34	36	38	40	42	44	46	48	50	52
162–169	117.7	118	118.2	118.5	118.7	119	119.3	119.5	119.8	120
172–179	122	122.3	122.5	122.8	123	123.3	123.3	123.8	124	124.2

Height, ft	Side seam length, in									
	2	4	6	8	10	12	14	16	18	20
5'4"–5'7"	46 3/8	46 1/2	46 1/2	46 5/8	46 3/4	46 7/8	47	47	47 1/8	47 1/4
5'8"–5'10"	48	48 1/8	48 1/4	48 3/8	48 3/8	48 1/2	48 1/2	48 3/4	48 7/8	48 7/8

### SLEEVE LENGTH

Height, cm	Sleeve length including shoulder width, cm
162–169	76.2
172–179	78.1

Height, ft	Sleeve length including shoulder width, in
5'4"–5'7"	30
5'8"–5'10"	30 3/4

## FABRICS AND NOTIONS

- Main fabric, 140 cm (55") wide, in meters/yards:

Height, cm	EU Size									
	34	36	38	40	42	44	46	48	50	52
162–169	3.25	3.25	3.25	3.3	3.35	3.4	3.9	3.9	3.9	3.9
172–179	3.3	3.3	3.3	3.4	3.45	3.5	4	4	4	4

Height, ft	US Size									
	2	4	6	8	10	12	14	16	18	20
5'4"–5'7"	3 1/2	3 1/2	3 1/2	3 5/8	3 5/8	3 3/4	4 1/4	4 1/4	4 1/4	4 1/4
5'8"–5'10"	3 5/8	3 5/8	3 5/8	3 3/4	3 3/4	3 7/8	4 3/8	4 3/8	4 3/8	4 3/8

- Elastic, 1 cm (3/8") wide, cm/in:

Height, cm	EU Size									
	34	36	38	40	42	44	46	48	50	52
162–169	51	55	59	63	67	71	75	79	83	89
172–179	51	55	59	63	67	71	75	79	83	89

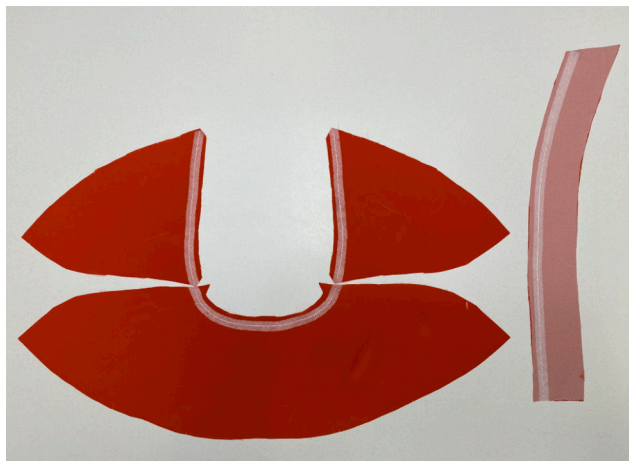
Height, ft	US Size									
	2	4	6	8	10	12	14	16	18	20
5'4"–5'7"	20 1/8	21 5/8	23 1/4	24 3/4	26 3/8	28	29 1/2	31 1/8	32 5/8	35
5'8"–5'10"	20 1/8	21 5/8	23 1/4	24 3/4	26 3/8	28	29 1/2	31 1/8	32 5/8	35

- Lightweight knit interfacing – 3 cm (1 1/8")
- Matching thread – 5 spools
- Fifteen buttons or button blanks
- Stitched bias-cut fusible stay tape – 1.9 m (2 1/8 yd)

## TOOLS AND EQUIPMENT

- sewing machine
- overlocker
- loop turner
- press tool for button covering

### STEPS 1-2



Fully interface the following pieces:

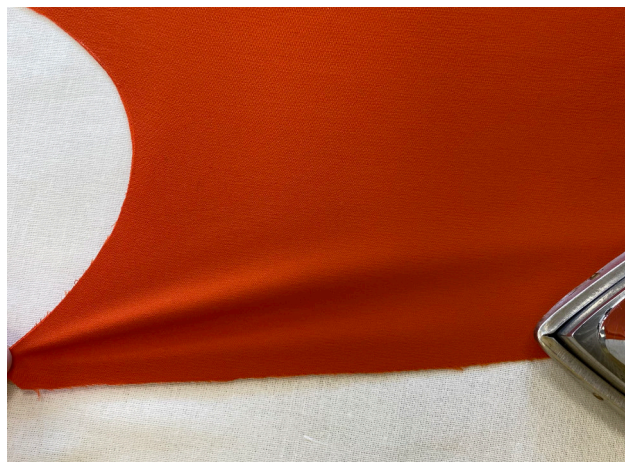
- front facing – 2 pieces

Interface the following edges with stitched bias-cut fusible stay tape:

- pocket opening section of the side edges on the front leg pieces
- neckline edge of the outer back yoke piece
- neckline edges of the outer front yoke pieces
- fastening seam allowance on the front facing pieces

### STEP 3

Press and steam the back leg pieces. Place the back leg pieces right sides together. Stretch the inseam edges upwards by 1 cm (3/8") as you press.



### STEP 4

Stretch the crotch seam edge by 1 cm (3/8"), between the inseam and the crotch seam corner.

