

KRIS

Kris is a voluminous straight-cut blouse. The front features a center front seam with a keyhole opening at the neck. The neckline is round. The casings running along the neckline and sleeve bottoms have drawstrings threaded through them. Long, voluminous raglan sleeves are flared towards the bottom. Kris is below-the-hip length.

GARMENT EASE

	Bust ease	Waistline ease	Hipline ease
centimeters	37.3	57.6	32
inches	14 5/8	22 5/8	12 5/8

GARMENT LENGTH, SLEEVE LENGTH

Height, cm	Garment length from waist down, cm	Sleeve length including shoulder width (estimated), cm
162–169	26	75.8–77.5
172–179	28	78.8–80.4

Height, ft	Garment length from waist down, in	Sleeve length including shoulder width (estimated), in
5'4"–5'7"	10 1/4	29 7/8–30 1/2
5'8"–5'10"	11	31–31 5/8

SHOPPING LIST

To sew this blouse, choose fabrics with the following properties:

- lightweight to medium weight, with good drape, soft, non-stretch or with very little stretch
- the fiber content can include natural or artificial fibers, blends and synthetics

Recommended fabrics: satin, silk, chiffon, crepe de chine.

The blouse in the photo is made of artificial silk. The fabric is medium weight, soft, with good drape and very little stretch. The fiber content is a blend of viscose and polyester.

FABRICS AND NOTIONS

- Main fabric, 140 cm (55") wide, in meters/yards:

Height, cm	EU Size									
	34	36	38	40	42	44	46	48	50	52
162–169	2	2.1	2.1	2.2	2.3	2.35	2.35	2.4	2.45	2.45
172–179	2.1	2.15	2.2	2.25	2.35	2.45	2.45	2.5	2.5	2.55

Height, ft	US Size									
	2	4	6	8	10	12	14	16	18	20
5'4"–5'7"	2 1/8	2 1/4	2 1/4	2 3/8	2 1/2	2 5/8	2 5/8	2 5/8	2 5/8	2 5/8
5'8"–5'10"	2 1/4	2 3/8	2 3/8	2 1/2	2 5/8	2 5/8	2 5/8	2 3/4	2 3/4	2 3/4

- Matching thread — 1 spool

TOOLS AND EQUIPMENT

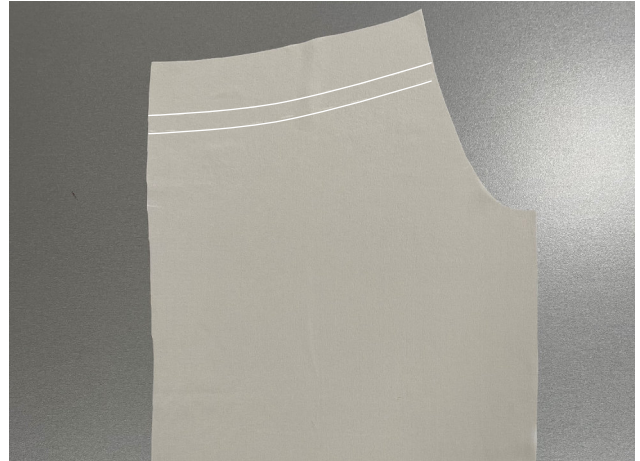
- Sewing machine

STEP 1

Mark the casing lines on the wrong side of the front, back and sleeve pieces.

Partially interface the following:

- buttonhole areas on the sleeves.



STEPS 2-3

