

FROM THE FOUNDER OF THE #VIKISEWS BRAND



Back in 2016, when I was working on my first set of sewing instructions, I was trying to write them in such a way that even a complete beginner could easily understand and use them to create their very first garment. These instructions laid the foundation for the Vikisews brand, its vision and its mission. I wanted to create modern patterns with the utmost detailed and clear instructions.

Now, with each new collection we are constantly improving our instructions, amending them and adding more relevant details. By the time the final product reaches you, our drafters, correctors, and editors would have spent weeks perfecting every word and every photograph. If you compile a few of our instructions together, you will get a sewing manual that will assist you in sewing all kinds of garments at any difficulty level.

And I would be very happy if these instructions helped you to turn your hobby into a lifelong passion... Enjoy the process! Create your ultimate dream wardrobe! Wear your garments proudly for years to come!

If you have any questions, please contact us at info@vikisews.com - we are always there to help.



LAIMA PATTERN DESCRIPTION

Laima is a semi-fitted wrap blouse with a straight silhouette. The front bust darts have been transferred to the side seam. The back features shoulder darts transferred to the neckline. The blouse has a deep V-neckline, an extended shoulder line, and long set-in sleeves. The garment fastens with two tie belts attached to the front. Laima is below-hip length.



IMPORTANT!

The contents of this pattern are copyright protected and belong exclusively to Vikisews. You may use Vikisews patterns for personal use. It is prohibited to share Vikisews patterns and instructions with third parties, as well as to publish patterns and instructions online for public access. **Non-compliance with the mentioned rules is a violation of the US copyright law and may result in civil liability and criminal prosecution.**

You may use Vikisews patterns for commercial use, to sew custom-made garments and/or create fashion collections, on the condition that the patterns are solely used in a manufacturing setting and are not further shared with individuals.

TOTAL EASE ALLOWANCE

	Bust ease	Waistline ease	Hipline ease	Upper arm ease
cm	18.6–15.7	37.1	19	9.4–4.8
inches	7 3/8–6 1/8	14 5/8	7 1/2	3 3/4–1 7/8

GARMENT LENGTH, SLEEVE LENGTH

Height, cm	Back length, cm	Sleeve length including shoulder width, cm
1 (154–160)	70.5	74.1–78.5
2 (162–168)	73.5	76.1–80.6
3 (170–176)	76.6	78.1–82.6
4 (178–184)	79.5	80.2–84.5

Height, ft	Back length, in	Sleeve length including shoulder width, in
1 (5'1"–5'3")	27 3/4	29 1/8–30 7/8
2 (5'4"–5'6")	28 7/8	30–31 3/4
3 (5'7"–5'9")	30 1/8	30 3/4–32 1/2
4 (5'10"–6'1")	31 1/4	31 5/8–33 1/4

SUGGESTED FABRIC

To sew this blouse, choose blouse- and dress-weight fabrics with the following properties:

- pliable, breathable, soft, non-stretch or with very little stretch, opaque
- the fabric content can include natural (silk, cotton, linen), artificial (viscose), blends (silk + polyester, silk + viscose, cotton + viscose, etc.), and synthetic fibers (polyester, polyester + elastane)
- the following fabrics are recommended: silk, artificial silk, satin, crepe, cupro, linen, silk velvet.

Attention! We do not recommend very stretchy knit fabrics and lightweight sheer fabrics (chiffon, organza, stretch lace).

The blouse in the photo is made of artificial silk. The fabric is soft, flexible, and has very little stretch. The fiber content is 100% polyester.

TOOLS AND EQUIPMENT

- sewing machine for construction
- overlocker for finishing raw edges. This may be replaced with a stretch overlock stitch or a zigzag stitch on the sewing machine (overlock or zigzag stitch width 2–3 mm, stitch length 2.5 mm)
- stitch-in-the-ditch foot for the sewing machine (optional)
- loop turner.

PATTERN PIECES LIST

1. From main fabric:

- back — cut 1 on fold
- front — cut 2
- sleeve — cut 2
- right tie belt — cut 1
- left tie belt — cut 1
- front facing — cut 2
- back neck facing — cut 1 on fold
- sleeve hem facing — cut 2.

2. From interfacing:

- front facing — cut 2
- back neck facing — cut 1 on fold.

IMPORTANT! Don't forget to transfer all pattern markings and notches onto the fabric.

SEAM ALLOWANCES

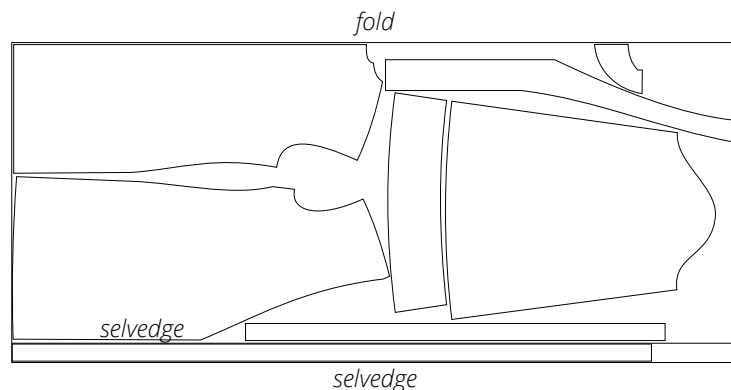
All pattern pieces include seam allowances as follows:

- garment hem allowance — 6 cm (2 3/8")
- all other edges — 1 cm (3/8").

Take this into account when laying out pattern pieces on the fabric.

CUTTING LAYOUT

Main fabric, 140 cm (55") wide, with a directional print, cut with one offset fold, for sizes 34–36 in all heights

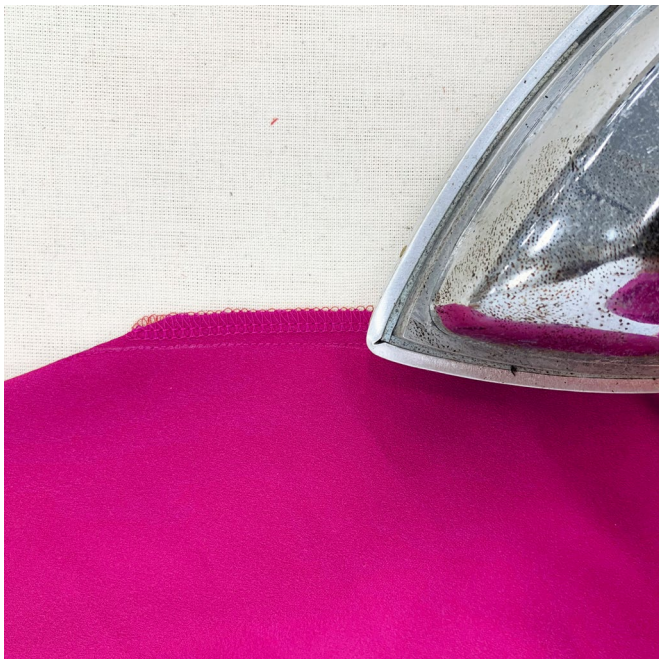


Attention! The fold is offset to accommodate the left tie belt piece.
Cut one right tie belt piece only.



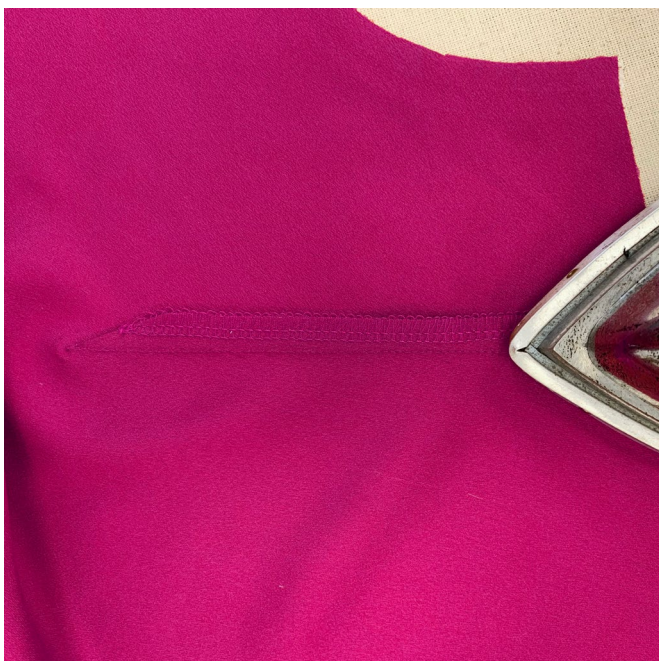
Attention! For sizes 40 and larger, we recommend trimming the extra bust dart width on the front pieces.

Mark a line at 1 cm (3/8") from the dart seam. Cut off excess dart width.



Overlock the seam allowance with the dart underside facing up.

Press the seam flat.



Press and steam the dart. Press the dart up, shrink out the fullness at the dart point, and then set with a tailor's clapper.