

FROM THE FOUNDER OF THE #VIKISEWS BRAND



Back in 2016, when I was working on my first set of sewing instructions, I was trying to write them in such a way that even a complete beginner could easily understand and use them to create their very first garment. These instructions laid the foundation for the Vikisews brand, its vision and its mission. I wanted to create modern patterns with the utmost detailed and clear instructions.

Now, with each new collection we are constantly improving our instructions, amending them and adding more relevant details. By the time the final product reaches you, our drafters, correctors, and editors would have spent weeks perfecting every word and every photograph. If you compile a few of our instructions together, you will get a sewing manual that will assist you in sewing all kinds of garments at any difficulty level.

And I would be very happy if these instructions helped you to turn your hobby into a lifelong passion... Enjoy the process! Create your ultimate dream wardrobe! Wear your garments proudly for years to come!

If you have any questions, please contact us at info@vikisews.com - we are always there to help.



LEONCIA PATTERN DESCRIPTION

Leoncia is a close-fitting dress. The slim fit is achieved by the bias cut and the center back seam. The dress features adjustable spaghetti straps and a draped front bodice. The bias-cut sleeves are long, narrow, and draped at the top. Leoncia is midi length.



IMPORTANT!

The contents of this pattern are copyright protected and belong exclusively to Vikisews. You may use Vikisews patterns for personal use. It is prohibited to share Vikisews patterns and instructions with third parties, as well as to publish patterns and instructions online for public access. **Non-compliance with the mentioned rules is a violation of the US copyright law and may result in civil liability and criminal prosecution.**

You may use Vikisews patterns for commercial use, to sew custom-made garments and/or create fashion collections, on the condition that the patterns are solely used in a manufacturing setting and are not further shared with individuals.

TOTAL EASE ALLOWANCE

	Bust ease	Waistline ease	Hipline ease	Upper arm ease
cm	4.6–5.8	15.2–22.4	17.2–24.4	3
inches	1 3/4–2 1/4	6–8 7/8	6 3/4–9 5/8	1 1/8

GARMENT LENGTH, SLEEVE LENGTH

Height, cm	Garment length at center back, cm	Sleeve length, cm
1 (154–160)	102.4	48.6–49.7
2 (162–168)	107.2–107.4	52.2–53.3
3 (170–176)	112.1–112.4	55.8–57
4 (178–184)	116.5–117.4	59.6–60.6

Height, ft	Garment length at center back, in	Sleeve length, in
1 (5'1"–5'3")	40 3/8	19 1/8–19 5/8
2 (5'4"–5'6")	42 1/4	20 1/2–21
3 (5'7"–5'9")	44 1/8–44 1/4	22–22 1/2
4 (5'10"–6'1")	45 7/8–46 1/4	23 1/2–23 7/8

SUGGESTED FABRIC

To sew this dress, choose dress-weight fabrics with the following properties:

- medium weight, pliable, soft, non-stretch or low-stretch, opaque
- the fiber content can include natural fibers (silk), artificial fibers (viscose), blends (silk + viscose, etc.), and synthetics (polyester, polyester + elastane)
- the following fabrics are recommended: satin, viscose, stretch crepe, silk.

Attention! We do not recommend stretchy knit materials or heavyweight structured fabrics.

The dress in the photos is made of artificial silk. The fabric is medium weight, pliable, soft, and low-stretch. The fiber content is 100% polyester.

PATTERN PIECES LIST

1. From main fabric:

- front bodice – cut 1
- front bodice lining – cut 1
- front skirt – cut 1 (part 1 + part 2 for the plotter format)
- back – cut 2
- back facing – cut 1
- sleeve – cut 2
- strap with ring tab - cut 2.

Before cutting the fabric, stick the two parts of the front skirt pattern piece together (plotter format).

***IMPORTANT!** Don't forget to transfer all pattern markings and notches onto the fabric.*

2. From interfacing

- back facing – cut 1.

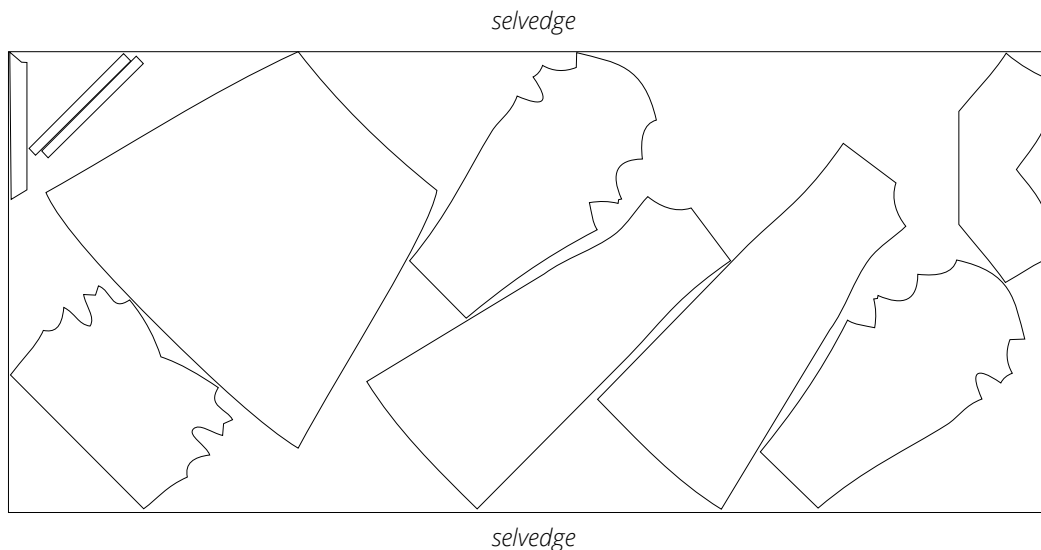
SEAM ALLOWANCES

All pattern pieces include 1 cm (3/8") seam allowances.

Take this into account when laying out pattern pieces on the fabric.

CUTTING LAYOUT

Main fabric, 140–145 cm (55–57") wide, cut on a single layer, for sizes 34–52 in heights 1–2; 140 cm (55") wide, cut on a single layer, for sizes 34–42 and 145 cm (57") wide for sizes 34–44 in heights 3–4, with a directional print





Machine-stitch the darts, backstitching at the beginning and end of the seam.

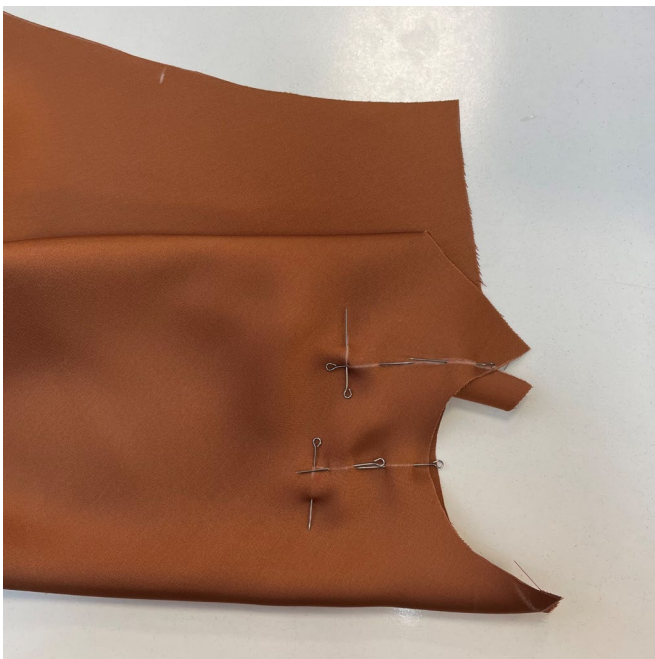
Press the darts flat.

Attention! From size 40 and up, the dart bulk should be trimmed down to 1 cm (3/8") to avoid imprints on the right side.



Steam press the darts, shrink out the fullness at the dart point on a tailor's ham.

Press the darts toward the center front.



Pin and machine-stitch the pleats on the front bodice, backstitch at the beginning and end of each seam.