

FROM THE FOUNDER OF THE #VIKISEWS BRAND



Back in 2016, when I was working on my first set of sewing instructions, I was trying to write them in such a way that even a complete beginner could easily understand and use them to create their very first garment. These instructions laid the foundation for the Vikisews brand, its vision and its mission. I wanted to create modern patterns with the utmost detailed and clear instructions.

Now, with each new collection we are constantly improving our instructions, amending them and adding more relevant details. By the time the final product reaches you, our drafters, correctors, and editors would have spent weeks perfecting every word and every photograph. If you compile a few of our instructions together, you will get a sewing manual that will assist you in sewing all kinds of garments at any difficulty level.

And I would be very happy if these instructions helped you to turn your hobby into a lifelong passion... Enjoy the process! Create your ultimate dream wardrobe! Wear your garments proudly for years to come!

If you have any questions, please contact us at info@vikisews.com - we are always there to help.



LUCIA PATTERN DESCRIPTION

Lucia is a close-fitting slip dress with an accentuated waist. The fit of the dress is achieved by the bias cut and a center back seam. The front of the dress features bust darts. The front and the back of the dress are finished with facings. The garment has spaghetti straps criss-crossing at the back. The back of the dress is open, V-cut, and framed with an insert at the waistline. The dress is midi-length.



IMPORTANT!

The contents of this pattern are copyright protected and belong exclusively to Vikisews. You may use Vikisews patterns for personal use. It is prohibited to share Vikisews patterns and instructions with third parties, as well as to publish patterns and instructions online for public access. **Non-compliance with the mentioned rules is a violation of the US copyright law and may result in civil liability and criminal prosecution.**

You may use Vikisews patterns for commercial use, to sew custom-made garments and/or create fashion collections, on the condition that the patterns are solely used in a manufacturing setting and are not further shared with individuals.

TOTAL EASE ALLOWANCE

	Bust ease	Waistline ease	Hipline ease
cm	1.8–6.1	11–15	11
inches	3/4–2 3/8	4 3/8–5 7/8	4 3/8

GARMENT LENGTH

Height, cm	Back length from waist down, cm	Height, ft	Back length from waist down, in
1 (154–160)	88	1 (5'1"–5'3")	34 5/8
2 (162–168)	92	2 (5'4"–5'6")	36 1/4
3 (170–176)	96	3 (5'7"–5'9")	37 3/4
4 (178–184)	100	4 (5'10"–6'1")	39 3/8

SUGGESTED FABRIC

To sew this dress, choose dress-weight fabrics with the following properties:

- medium-weight, pliable, soft, non-stretch or low-stretch, opaque
- the fiber content can include natural fibers (silk), artificial fibers (viscose), blends (silk + polyester, polyester + viscose, etc.), and synthetics (polyester, polyester + elastane)
- we recommend the following fabrics: silk, artificial silk, dress-weight viscose, crepe back satin, challis.

Attention! We do not recommend using stretchy knit materials (jersey fabrics) or lightweight sheer fabrics (chiffon, organza, stretch lace).

We recommend cutting the facings from the same fabric you use to sew the garment. This is essential when sewing a bias-cut garment. Even the slightest difference in the properties of the main fabric and the one you use for the facings can cause garment deformation.

The garment in the picture is made of dress-weight silk. The fabric is medium-weight, pliable, soft and non-stretch. The fiber content is 100% polyester.

IMPORTANT! When purchasing fabric, please account for shrinkage and buy 5% more than required.

2. Bias fusible stay tape – 1.2–1.6 m (1 1/4–1 3/4 yd)
3. Matching thread – 5 spools (1 spool for the sewing machine, 4 spools for the overlocker)

TOOLS AND EQUIPMENT

- sewing machine for construction
- overlocker for finishing raw edges. You can replace it with a stretch overlock stitch or a zigzag stitch on the sewing machine (overlock or zigzag stitch width 2–3 mm, stitch length 2.5 mm)
- stitch-in-the-ditch foot for the sewing machine (optional)
- loop turner

PATTERN PIECES LIST

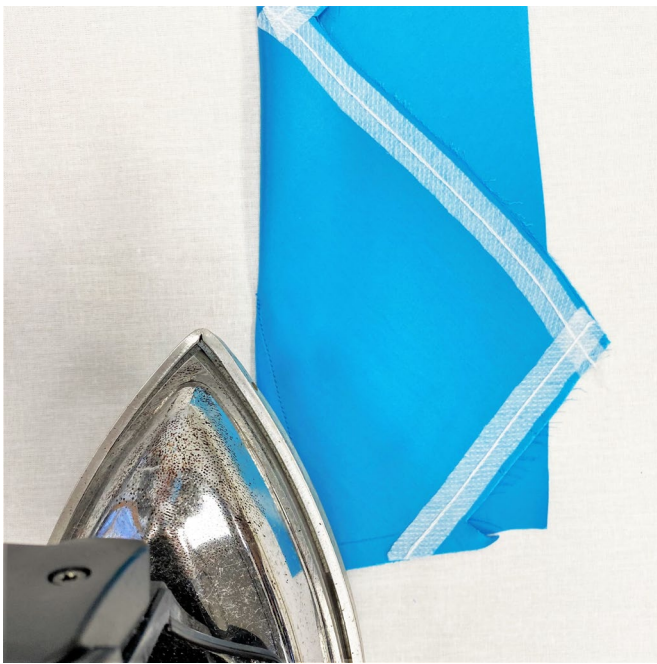
1. From main fabric:

- front – cut 1
- back – cut 2
- strap – cut 2
- front facing – cut 1
- back insert – cut 2

IMPORTANT! Don't forget to transfer all the notches from the pattern to your fabric.

SEAM ALLOWANCES

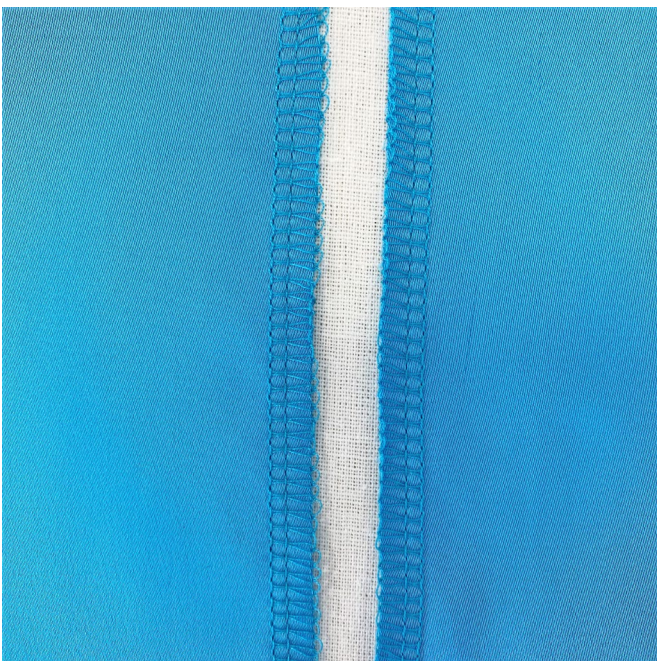
Pattern pieces already include 1 cm (3/8") seam allowances for all edges. Take this into account when laying out pattern pieces on the fabric.



Press the darts flat.



Press the seam allowances of the darts up. Press around the dart apexes to shrink away excess volume.



Finish the edges of the center seam of the back pieces with an overlocker. Press the seam allowances flat.